

Pinnacle



## Case Study

# Scaling the Seas with Security

Seamless Security Integration for a Luxury Yacht with Pinnacle

### Industry

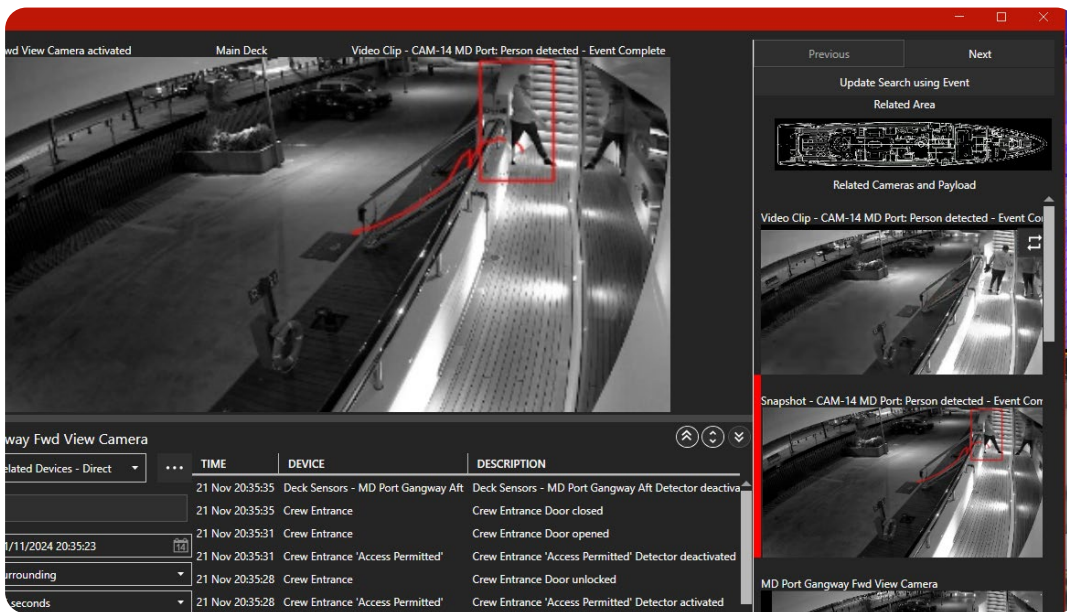
Luxury Travel, Transportation

### Features

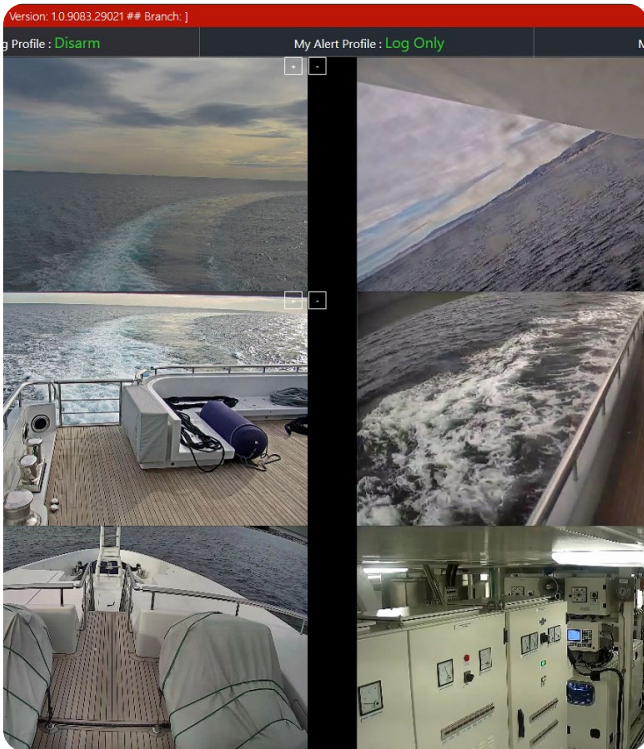
CCTV Monitoring, Arming Profiles

# The End User

The end-user is a large, privately owned yacht equipped with advanced security systems, including CCTV, access control, analytical detection, and long-range thermal cameras. These technologies ensure the safety and security of the vessel and its occupants.







## The Challenge

Security systems are historically design based on a risk assessment, but in the marine world that risk is an ever-changing thing as the vessel moves around and has different people on board. Larger vessels are also often packed full of technology and this vessel was no different, but the crew are not trained security operatives, so they need a simple and easy solution to control the security onboard.

## The Solution

The yacht’s security system comprised **Axis** cameras running on a **Milestone VMS**, **FLIR** thermal cameras, **Paxton** access control, multiple door and hatch sensors, and **Davantis** analytics for motion detection on the external deck areas.

Pinnacle was deployed to integrate all these systems into one centralised platform, providing the crew with customisable arming profiles based on specific scenarios. For instance, when only the crew is on board and the “Crew Only” profile is armed, doors lock, and all sensors trigger alerts to

smartphones via the **GlobalView Systems R-Linx** Unit. When guests are on board, only key sensors send alerts allowing guests to use the guest areas freely.

In addition to the arming profiles, Pinnacle also monitors the health of the connected devices and offers customisable controls to adjust the PTZ camera presets depending on whether the yacht is moored, at anchor, or underway.

## The Future

Looking ahead, the yacht's security system will continue to evolve with Pinnacle at its core. As the technology landscape advances, further integration with emerging security systems and smart devices is planned to enhance operational efficiency. The crew will benefit from ongoing updates to the arming profiles, making it even easier to adapt to varying conditions. Additionally, Pinnacle's ability to monitor device health will enable proactive maintenance, ensuring that the security systems remain reliable and fully operational. With a scalable, flexible solution in place, the yacht is well-positioned to maintain the highest security standards as its needs grow and change.





# Pinnacle

## About Pinnacle

Pinnacle is an open integration platform that is reaching new heights within the security market. Just because security systems are complex, doesn't mean they have to be complicated to use. Our mission has been to build an open, multisite integration system in the electronic security market with a centralised fault management platform that is truly versatile, adaptable, and effective.

We are the leading provider of a truly vendor-agnostic platform that started life in the security domain, but has steadily expanded to allow integrations across different sectors - connecting data and CCTV images for improved analysis that will, in turn, drive greater efficiencies in the modern world.

## Let's integrate! To book a demo or get in touch, here's how:

[info@pinnacle-systems.com](mailto:info@pinnacle-systems.com)

Pinnacle Systems, No. 1 Glasshouse - 1LG1, Alderley Park, Alderley Edge, Cheshire, SK10 4TG

Pinnacle is based in the United Kingdom. For more information, visit [www.pinnacle-systems.com](http://www.pinnacle-systems.com)



pinnacle-systems-ltd

© Copyright 2024 Pinnacle Systems Ltd